



Total Solar Signboards,  
Industrial Tagging, Packing  
& Fabrication Solution



شركة اس كيه جي للدعاية و الاعلان ذ.م.م  
SKG Publicity & Advertising Co. WLL

Fiber Laser Marking



Fiber Metal Laser Cutter



Co2 Laser Cutter and Engraver



CNC Hydraulic Press Brake



## OUR SPECIALITIES :

With pleasure we would like to introduce SKG Advertising as one of the growing company producing all types of Industrial Tags, internal and external, illuminated and non-illuminated signage's, Solar Signage ( Directional Arrow , VMS, Speed Radar)

Aluminium Vacuum Packing & wooden crates, Electrical Panel & Cabinet boxes fabrication

SKG ADVERTISING is established with a vision and mission to focus on growing market to provide customer with desired and satisfying products and services.

PRODUCTION FACILITY : To cater to wide range of customer's and custom made requirements. SKG have right type of facility to produce.

1. Graphic designs
2. Fabrication – Metals and Plastics
3. Cutting – Water jet, Fiber Laser, Router, etc.
4. Welding – Mild Steel, Aluminium, Stainless steel, Brass & Copper
5. Painting - Spray / Powder Coating
6. Printing - Digital printing, screen printing, Heat transfer, etc.
6. Vinyl and Graphic – computerized Plotter cutting and mounting
7. Etching and Engraving – Stainless Steel, Anodized Aluminium, Brass, Mild Steel etc.
8. Stainless steel Cable Tag Embossing
8. Sign repair, servicing and maintenance.
9. Solar directional arrow, Message Signage, Speed Radar
10. Carpentry -Exhibition Stand, Wooden Crates, Pallets, Aluminium Vaccum Packing.

## PRODUCTS :

1. Flex signs – Single / Double sided
2. 3D Box type letter signs – Front lit, Backlit, Front and backlit
3. Illuminated Acrylic Edge lit signs
4. Non- illuminated cut letter signs.
5. Custom made acrylic products – stands, boxes, holders, etc..
6. Digital printing – Banners, Roll up, Pop up stand, etc.
7. Plotter cut graphics on any surfaces
8. Vehicle Branding
9. Aluminium High Intensity reflective Traffic & Informative signs.(Aluminium post as well as on foldable stand)
10. SS Etching, Aluminium , plastic Engraving and Screen printing signs
11. Stainless steel Cable Tag Embossing
12. Name Badges (SS, Brass, ( with / without epoxy coating) Anodized aluminium, Engraving
13. Gifts and promotional items
14. Printing, Embroidery and Heat Transfer on T shirts, caps, Boiler suits, Uniform, etc.
15. Event and Exhibitions Backdrops.
16. Traffic cones, barriers, warning tapes, etc.
17. Solar Signage ( Directional Arrow , VMS, Speed Radar)
18. Aluminium Vacuum Packing & wooden crates
19. Electrical Panel & Cabinet boxes fabrication

## CLIENTS :

Ministries / Electrical & Instrumentation / Air-conditioning / Fire & Safety, Electromechanical /Petroleum, oil & Gas Industries / Road / Bridge / Building Companies/ NAVY / Panel Manufactures





Total Solar Signboards,  
Industrial Tagging, Packing  
& Fabrication Solution

شركة اس كيه جي للدعاية و الاعلان ذ.م.م  
SKG Publicity & Advertising Co. WLL

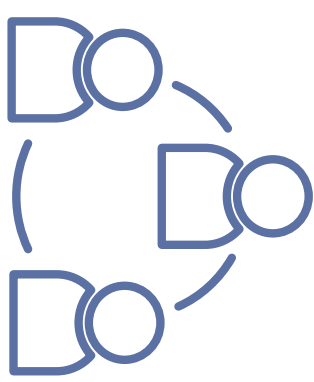


**Kishor**  
Director - CEO

# ORGANIZATIONAL

## CHART

GENERAL MANAGER



HEAD OF SALES & MARKETING

HR / ACCOUNT MANAGER

FACTORY MANAGER

PROJECT COORDINATOR

SALES & MARKETING  
TEAM



SALES  
EXECUTIVE  
01



SALES  
EXECUTIVE  
02



SALES  
EXECUTIVE  
03



SALES  
EXECUTIVE  
04

HR & ACCOUNT  
DEPARTMENT



FINANCE  
01



HR  
MANAGER  
01



SENIOR  
ACCOUNTANT  
02



ASSISTANT  
ACCOUNTANT  
03

ADMIN

STORE

WORKSHOP



PRODUCTION  
SUPERVISOR  
01

Welding & Fabrication  
Department.

Signboard  
Department.

Solar - VMS  
Department.

Metal & Etching  
Department.

Wooden Packaging  
Department.

Safety & Road Sign  
Department.

PRINTING & CUTTING



STUDIO  
MANAGER  
01

GRAPHIC DESIGNE

DIGITAL PRINTING

CABEL TAG PUNCH

EPOXY NAME  
BADGE

LASER CUTTING

SUBLIMATION

QUALITY CONTROL

DELIVERY

The stainless steel etching process produces precision components by selectively removing metal through a photoresist mask.

- \* The ability to produce parts without degrading material properties – no force or heat is used during processing
- \* Almost limitless part complexity with component features machined simultaneously using etchant chemistries

The stainless steel etching process starts with metal laminated with a light-sensitive photoresist which is exposed with UV-light to transfer the CAD image of the component. The areas of unexposed photoresist are removed (developed), then sprayed with etchant chemistry to accurately remove the unprotected stainlesssteel. The remaining photoresist is removed (stripped) to reveal the final etched component.

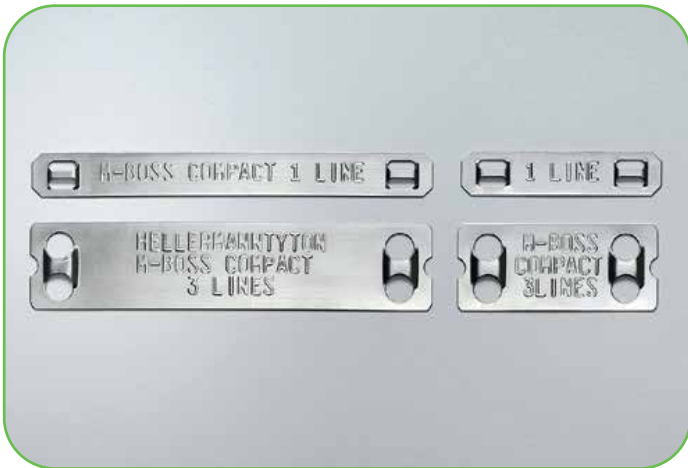




## CABLE TAGGING

Stainless steel tags (AISI316) are used to label cables and pipes in areas with environmental, mechanical and chemical loads.

This solution works well with offshore-and petrochemical industries, shipbuilding, collective traffic or for signs to withstand all kinds of weather.

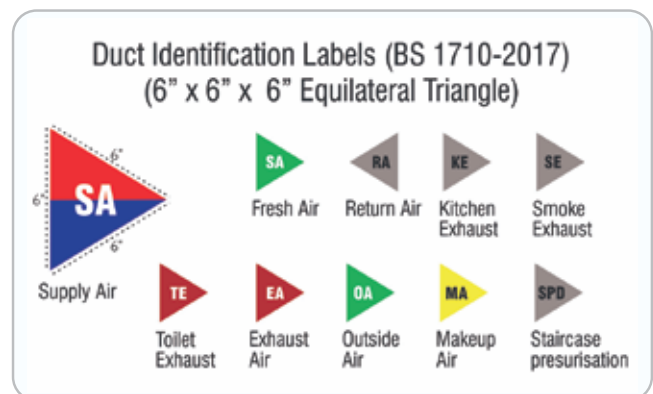


# HVAC IDENTIFICATION TAGS

HVAC (heating, ventilation, and air conditioning) systems consist of numerous components, many of which may need to be properly labeled. Labeling HVAC components is an inexpensive and effective method to facilitate maintenance and operations. The following are examples of components that should be labeled appropriately for each zone in your facility:

- *The outdoor air, supply air, return air, exhaust air, relief air.*
- *Access doors for the air filters*
- *Filter pressure gauge*
- *Pertinent access doors*
- *Outdoor air damper with marks noting when damper*
- *Is fully closed, fully open and minimum designed position*
- *Access door to outdoor air controls*
- *Breakers for exhaust fans, air handling unit, unit ventilators*
- *Access doors for inspection and maintenance of air ducts*
- *Any dampers and controls for airside economizers.*

HVAC marking labels are an important part of all environmental comfort systems. HVAC pipes are used for the flow of hot or cold water. ANSI standards require that all HVAC pipe labels be color coded, have language explaining pipe use, and identify the name of the contents flowing through the pipes. The labeling must also include arrows that show the direction of the flow of the contents of the pipe. Labels should be easy to read and made of long lasting, durable products. HVAC labeling is an inexpensive yet effective method to help workers the proper operation and maintenance of HVAC systems.





**INDUSTRIAL | COMMERCIAL | RESIDENTIAL**

Traffolyte is an opaque multi-layered rigid phenolic HPL (High Pressure Laminate) which is commonly used for engraving around the world. Traffolyte is widely used in industry because of its hard exterior and its resistance to heat, making it perfect for use on surfaces which can build up heat such as machinery. It is low smoke and halogen free. It is also popular as it is easily cleaned, acid and alkali resistant. It is naturally hard-wearing and will not oxidize if left outside in the elements. It adheres to the European Standard EN438 and International Organization for Standardization ISO 4586.

The name Traffolyte comes from the location of the original manufacturers. Metropolitan Vickers, Electrical Limited, the inventors and manufacturers of the material, were based at Trafford Park Works in Manchester. The company ceased manufacturing the material in the 1960's a similar material is now made by various companies in a number of countries.



## UNDERGROUND WARNING TAPES

Caution Electrical Cable, Gas Pipes, Water Pipes Below. Underground warning tapes provide visual warning of underground services including gas, water and low voltage electricity services. Caution tapes or cable marker tapes prevent against accidental cable damage during excavation.

Underground warning tapes can be manufactured with any text, colour or size.

Underground Detection Tape is a coloured plastic detectable tape for marking and detecting buried underground pipe and cable services.





## ROUTE MARKER

Stainless steel or Anodized aluminium Cable Route Markers (square) are mainly used to help identify and locate electrical cables and other electrical utilities that are buried underground. They can also be used together with cable slabs to mark boundaries and other reference points.

All power cable and fiber optic cable routes shall be provided with identification markers of a permanent material and of an approved type, so as to indicate the locations of cables and joints.

Where cables are laid direct in ground, cable route markers shall be provided at intermediate points along the route not more than 50 meters apart and at all points where trench changes direction and branches-off.



## ROAD SAFETY SIGNAGE



## INDUSTRIAL SAFETY SIGNAGE





## REFLECTIVE SIGNS BRING SAFETY IN THE DARK

Our highly reflective safety signs greatly increase safety in dark places. They reflect twice as much light when lit with a torch or vehicle headlights and can be used both in- and outdoors.

## HIGHLY VISIBLE

Our reflective signs are highly visible because they reflect light back without blinding thanks to their retroreflective prismatic sheeting. In general, they are twice as reflective as signs with standard glassbead retroreflective sheeting. This will enable coworkers to better see the signs in dark and harsh weather environments when lit with a torch or vehicle headlights.

## GREAT FOR OUTDOOR USE

Reflective signs are available on aluminium boards for outdoor use. These boards feature double bended sides and do not have any sharp edges. They are available in round, triangular, square and rectangular shapes. Every board is also available with round or square poles in different lengths, with brackets or base plates for optimal outdoor installation.

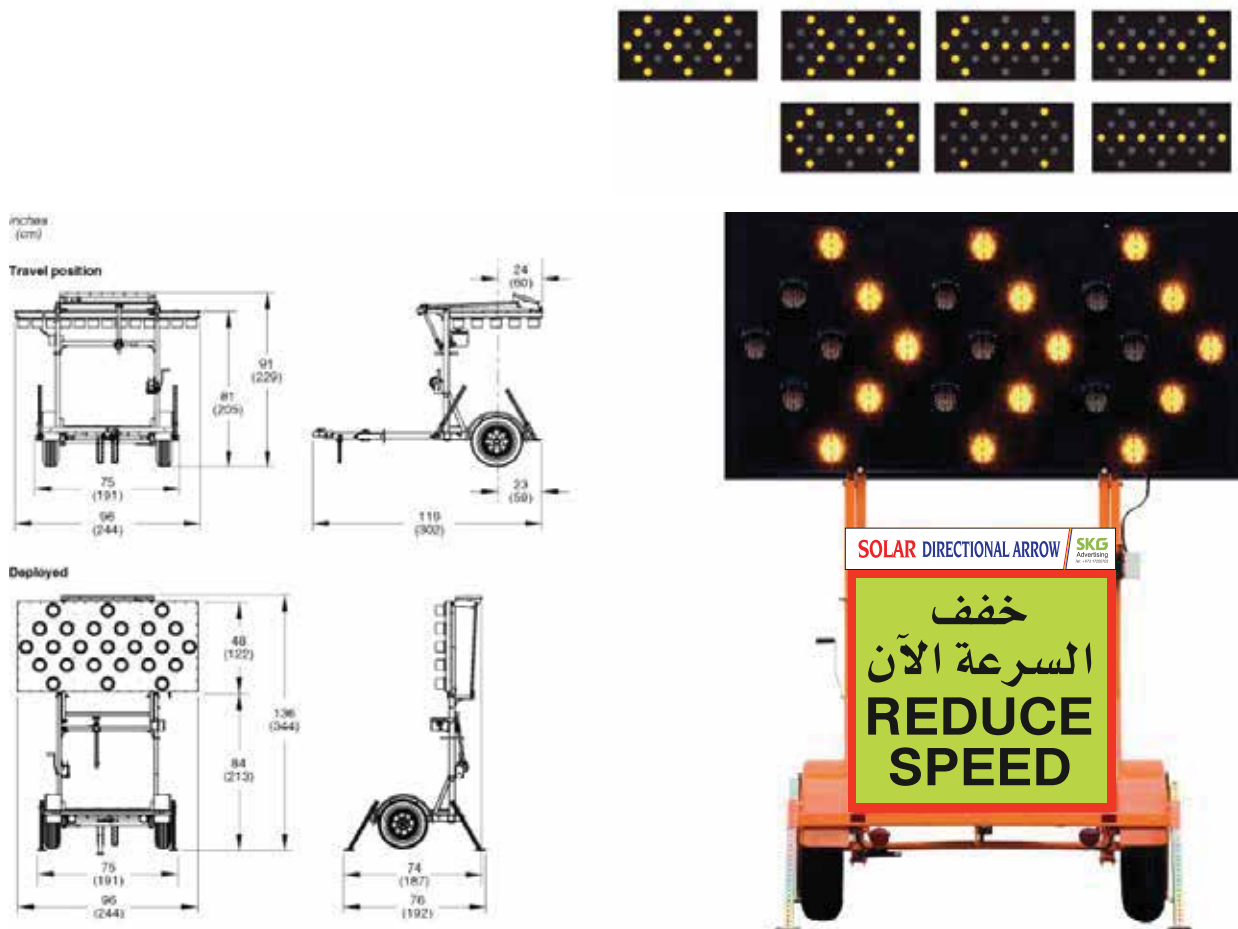




# MOBILE ELECTRONIC DIRECTIONAL ARROW

## Product description

Mobile electronic directional arrows (Mobile DA) are to be used for traffic safety and control for all road works being undertaken in highways, arterial roads and other important roads in the Kingdom of Bahrain.



## Display

A multiple, LED lamp network shall be provided capable of displaying directional arrow indication. A single display shall be capable of showing either left or right arrows. The display shall have a matt black background with arrows displayed in yellow LED clusters. The display shall be powered by solar panels of appropriate size to both run the display and trickle charge the on-board battery support. During the hours of darkness the batteries shall support operation for a minimum of 18 hours.

The display shall generally comply with:

- Multiple LED lamp display
- Typically 2.4m wide x 1.2m high
- Typically 25 lamp clusters arranged to allow bi-directional arrow display

- Yellow LED –wavelength c590 nanometer
- Steel or aluminum frame, finished matt black. Locking mechanism for stowing flat when in moving mode
- Operating temperature -20°C to +85°C (or certified by supplier as suitable for operating continuously, without fault in ME conditions), 95% relative humidity (non-condensing). All circuit boards shall be covered in a conformal coating to prevent damage by moisture.

## Trailer

The arrow display, its solar panels, battery supply and control electronics shall be supplied built into a single axle trailer suitable for towing by automotive vehicle. The trailer shall be provided with:

- Tow hitch complete with 50mm ball coupling and pintle ring assembly rated up to two tones, drilled for securing with padlock. A brake surge actuator shall be fitted to bring on emergency brakes in the event of disconnection from towing vehicle.
- Raisable jockey wheel and corner jacks
- Complete with stop, turn and signal lights in rear of trailer complete with amber (front) and red (rear) side marker reflectors. A suitable electric coupling shall be provided to allow connection to the towing vehicle.
- Lockable , vented enclosures for housing batteries
- On board battery power – 12v 300Ah rating (manufacture specific)
- Lockable enclosure for housing sign controller
- All necessary linking cables and couplings to ensure correct operation of the system.

## Solar Panels

Crystalline silicon photovoltaic panels for converting sunlight into electricity of appropriate size will be provided. Solar panels will automatically set at 90° to the ground when the VMS is raised from the stowing position. The panels will:

- Be capable of operating the display independent of the battery supply
- Be capable of charging support batteries and display
  - Be capable of being tilted to angles between horizontal and vertical.

## Controller

A sign controller and input device shall be provided to allow users to select appropriate sequences for display. It shall be possible to select either direction for the arrow display. Arrow operation shall either be:

The sign controller shall additionally be provided by:

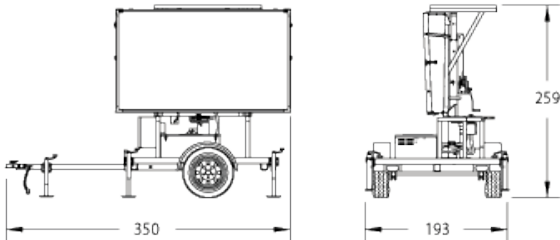
- Sequential back to front in direction of flow or
- Solid flashing arrows. Flash rate programmable from 1 to 5 seconds
- Manual or automatic brightness control via remote photoelectric sensor
- Operating temperature- +85°C with 95% humidity (NC)

# SOLAR POWERED TRAILER MOUNTED MOBILE MESSAGE BOARD

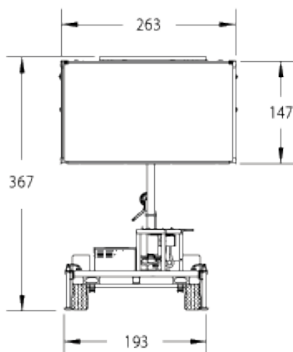
## Product description

Solar VMS signs are the ideal choice when you need to get information to the public. The full matrix allows the greatest flexibility for displaying any type of message — large or small letters, graphics and symbols. Perfect for a wide variety of applications, a multitude of functions and options make these signs extremely versatile.

Travel Position



Deployed



## Display

A full matrix, LED VMS have provide to allow for the displaying of text only, pictograms or a combination of both. The display have a matt black background with message conveyed in yellow LED's. The display have powered by solar panels of appropriate size to both run the display and trickle charge the on-board battery support. During the hours of darkness the batteries shall support operation for a minimum of 18 hours.

The display shall generally comply with:

- Full matrix LED display, nominally in a 9:6 aspect ratio (width to height)
- Typically 2m wide x 1.4m high
- Typically 50(W) x 30(H)pixel matrix
- Nominal 40mm pixel pitch
- Yellow LED -wavelength c590 nanometer
- Various fonts available in both English and Arabic equivalents
- Typical viewing angles 70° ( vertical ), 120° (horizontal)
- Steel or aluminum frame, finished matt black. Locking mechanism
- 5mm matt, vandal resistant polycarbonate front panel
- IP rated 65 enclosure
- Operating temperature -20°C to +85°C (or certified by supplier as suitable

for operating continuously, without fault in ME conditions), 95% relative humidity (non-condensing). All circuit boards shall be covered in acon formal coating to prevent damage by moisture.



## Trailer

The VMS display, its solar panels, battery supply and control electronics shall be supplied built into a single axle trailer suitable for towing by automotive vehicle. The trailer shall be provided with:

- Towhitch complete with 50mm ball coupling and pintle ring assembly rated up to two tones, drilled for securing with padlock. A brake surge actuator shall be fitted to bring on emergency brakes in the event of disconnection from towing vehicle.
- Raisable jockey wheel and corner jacks
- Complete with stop, turn and signal lights in rear of trailer complete with amber (front) and red (rear) side marker reflectors. A suitable electric coupling shall be provided to allow connection to the towing vehicle.
- An electric / hydraulic power ram to raise and lower the display & solar panels. Optional manual pump may be provided.
- Lockable, vented enclosures for housing batteries
- On board battery power – 12v 300Ah rating (manufacture specific)
- Lockable enclosure for housing sign controller
- All necessary linking cables and couplings to ensure correct operation of the system.

## Solar Panels

Crystalline silicon photovoltaic panels for converting sunlight into electricity of appropriate size will be provided. Solar panels will automatically set at 90° to the ground when the VMS is raised from the towing position. The panels will:

- Be capable of operating the display independent of the battery supply
- Be capable of charging support batteries and display
- Be capable of being tilted to angles between horizontal and vertical.

## Controller

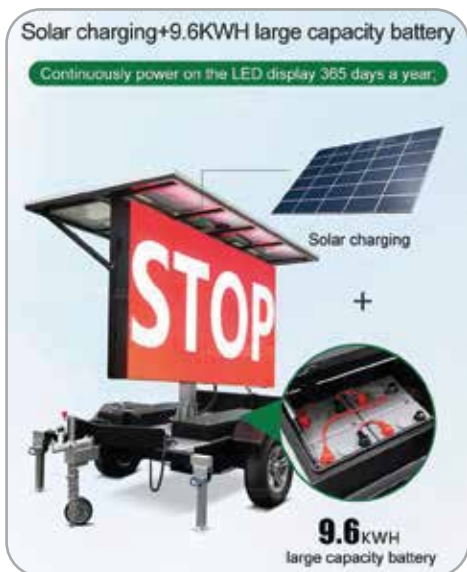
The unit will contain a PC based sign controller and input device to allow users to select appropriate messages for display. Operation shall be in a familiar “windows” based environment and shall be easy to use. The PC shall use embedded operating system. The text messages shall be displayed alternatively in English and Arabic fonts. Direct Arabic / English fixed messages shall be provided. The message text shall be capable of being used in association with pictograms on the same display. When a pair of messages is selected the display shall sequentially cycle the text at a user variable rate of between 1.0 and 1.5 seconds. When the programs are displayed, it shall be possible to flash the pictogram on and off at the same cycle rate as above. It shall be possible to configure the display to function as an “Arrow board” with sequential, directional flashing arrows.

The sign controller shall additionally be provided by:

- RS 232 diagnostic or laptop communications port, USB, WIFI.
- Support IP based communication technologies
- Minimum 100 pre programmed messages
- Manual or automatic brightness control via remote photoelectric sensor
- Operating temperature +85°C with 95% humidity (NC)

# SOLAR LED TRAFFIC SIGNS

In the operation and maintenance of highway networks, it is necessary from time to time to put in place temporary traffic management measures to facilitate safe road works, temporary closures or incident management, whilst keeping the traffic flowing as freely as possible. With high traffic flows on many roads, it is particularly important to plan all works activities and temporary closures to optimise safety, road space and work efficiency, whilst minimising road user congestion, delay and inconvenience.



## P4 OUTDOOR FULL COLOR LED SCREEN TRAILER WITH SOLAR PANELS

Tube Chip Color : Full Color  
 IP Rating : IP65  
 Pixel Pitch : 4mm  
 Pixel Configuration : 1R, 1G, 1B  
 Display Function :  
 Video Display, Image & Text Display, Text Display,  
 Market Display  
 Average Power Consumption: 200W/Sqm  
 Solar battery power supply

LED Screen  
 Screen SIZE :2560mm(W)\*1600mm(H)  
 Hydraulic lifting System - Lifting Range 1000mm  
 Hydraulic Rotating System - Screen can rotate 360degrees

## OUR MAJOR CLIENTS



## SOLAR LED TRAFFIC SIGNS

The greater visibility of flashing solar LED traffic signs increases both drivers' and pedestrians' awareness. This autonomous signage works using solar power, allows easy installation, without need for external electricity. Our LED traffic signs are built from high quality materials and offer best performance over long life duration and result cost effective choice over competitive products.





## SOLAR RADAR SPEED MEASUREMENT

Traffic Speed Indicator Display Sign Kit

Power: 12V

2 Digit LED Display

Led Unit Size: 160\*22MM

Speed Check Distance Range: 1-400Meters

Setting Speed: Control From Card Buttons

Installation Sign Distance: 3-6Meters

Speed Sensor Needs 2-3 Meters Distance

### TRAFFIC SPEED SENSOR DESCRIPTION:

1. Detection Lane: Two-way (Coming/going) 2-4 Lanes.
2. Speed Range: (1 - 450)km/h.
3. Microwave Center Frequency: K Band: 24ghz.
4. Microwave Transmits Power (Erip): 20dbm.
5. Communication Interface: Rs485 (Default Rs485)/rs232/TTL (Uart3v Level)/switch Signal (Relay).
6. The Default Baud Rate Is 115200bps.



### TRAFFIC SPEED INDICATOR DISPLAY SIGN:

When the Vehicle Speed is Equal to or Greater Than the Set Speed Limit, the Display Shows a Red Number to Remind the Driver to Reduce the Driving Speed and Pay Attention to Driving Safety; When the Vehicle Speed is Lower Than the Set Speed Limit, the Display Shows a Green Number and the Driver Can Be Normal Driving.

Usually Deployed in School Districts, Communities, & Accident-prone Areas where Compliance With Speed Limits is Critical.

### FEATURES:

- 1- Traffic Speed Sensor: With the Millimeter Speed Sensor, You Can Easily Measure Your Traffic and Speed in a Blink of an Eye
- 2- Feedback Device: With the Built-in Feedback Device, You Can Send Your Feedback to the Device With a Simple Push of a Button.
- 3- Works Perfectly: The Millimeter Can Be Used to Measure Your Speed, Distance, Wattage, Etc. It is Also Suitable for Schools, Parks, Airports, Hotels, and Other Places Where You Need to Use This Sensor.
- 4- Small and Exquisite: Small and Compact, Easy to Carry, and Can Be Used as a Home or Office Tool. It is Very Suitable for Schools, Offices, Parks, Etc.
- 5- Installation Method: Formal Installation, Oblique Side Installation.
- 6- Radar Features: Support Remote Upgrade.
- 7- Low Consumption.
- 8- The Detection Distance is Long.
- 9- High Flexibility.

## SPEED RADAR

LED Screen Trailer with Solor Panels

Solar battery : 100AH

Solar Panel : 180watt

LED Screen : Size :600mm(W)x600mm(H)

Hydraulic lifting System : Lifting Range 1000mm

Hydraulic Rotating System : Screen can rotate 360degrees



## CUSTOM SOLAR SIGNS

Solar Signage Kit is a bespoke solution for lighting outdoor totems and monoliths. Each kit provides optimal performance and substantial energy and cost savings, and being an off grid solution, eliminates the need for digging and cabling, meaning install time and costs are even more significantly reduced. Ongoing costs are also eradicated and the overall environmental impact of a solar powered scheme is much lower than an on grid solution.

### FEATURES

- Energy efficient with zero running costs
- Virtually maintenance free
- Instant installation & minimal disruption
- High reliability
- Easier reading
- Robust and Durable - Anti-vandal
- PIR interface
- Dimmable and with timer functionality
- Discreet, PV positioning
- Even illumination
- Bespoke options



# REGULATORY SIGNS

# العلامات التنظيمية

600 mm Oct. 3.00 mtr. Post	600 x 600 mm 3.00 mtr. Post	600 mm Dia. 3.00 mtr. Post	600 mm Dia. 3.00 mtr. Post	600 mm Dia. 3.00 mtr. Post	900 mm Dia. 3.50 mtr. Post	1200 mm Dia. 4.00 mtr. Post	600 mm Dia. 2.00 mtr. Post
900 mm Dia. 2.30 mtr. Post	600 mm Dia. 1.50 mtr. Post	900 mm tria. 3.50 mtr. Post	1200 mm tria. 4.00 mtr. Post	900 mm tria. 3.50 mtr. Post	600 x 600 mm 3.00 mtr. Post	600 x 600 mm 3.00 mtr. Post	500 x 650 mm 3.00 mtr. Post
900 mm tria. 3.50 mtr. Post	900 mm tria. 3.50 mtr. Post	1200 mm tria. 4.00 mtr. Post	900 mm tria. 3.50 mtr. Post	900 mm tria. 4.00 mtr. Post	1200 mm tria. 4.50 mtr. Post	900 mm tria. 4.00 mtr. Post	1200 mm tria. 4.50 mtr. Post
500 x 1500 mm 2.30 mtr. Post	1500 x 500 mm 2.00 mtr. Post	1800 x 600 mm 2.00 mtr. Post	1500 x 455 mm (post size remain same for all road names) 2.00 mtr. Post	450 x 700 mm 1.50 mtr. Post	700 x 1050 mm 2.00 mtr. Post	600 x 1000 mm 2.30 mtr. Post	900 x 1200 mm 4.00 mtr. Post




# HIVIS 101:

HOW TO KNOW  
WHEN IT'S TIME TO

REPLACE YOUR  
SAFETY VEST



Check Out SKG Advertising Selection Of Hi Vis And ANSI Reflective Safety Vests, Including ANSI Class 2, Class 3, Non-ANSI, Flame Resistant And More. SKG Advertising Offers In House Custom Printing And Embroidery On Our High Visibility Safety Vests And Apparel To Help You Be Seen In Style



 <p><b>لاستخدام غسول العين</b> ١. اسحب الغطاء للتشغيل ٢. عرض عينك للماء لمدة ١٥ دقيقة ٣. ابلغ المشرف عن الإصابة</p> <p><b>TO USE THE EMERGENCY EYE WASH</b> 1. PULL THE CAP TO ACTIVATE 2. FLUSH YOUR EYES THOROUGHLY FOR 15 MINUTES 3. CONTACT YOUR SUPERVISOR TO REPORT INJURY</p>	<p><b>دش وغسول العين</b> للطوارئ <b>EMERGENCY SHOWER &amp; EYE WASH</b></p>  	 <p><b>مطفأة الحريق</b> <b>FIRE EXTINGUISHER</b></p>	<p><b>لاستخدام مطفأة الحريق</b> اسحب المسمار وجه الفوهة نحو قاعدة الحريق اضغط مقبض المطفأة مرر من جهة إلى أخرى</p> <p><b>TO USE THE FIRE EXTINGUISHER</b> 1. PULL THE PIN 2. AIM AT BASE OF FIRE 3. SQUEEZE HANDLE 4. SWEEP FROM SIDE TO SIDE</p>	
 <p><b>اللبس النظارات الواقية</b> <b>WEAR EYE PROTECTION</b></p>	 <p><b>يجب ارتداء واقي اليد</b> <b>WEAR HAND PROTECTION</b></p>	 <p><b>تحذير</b> مواد كيميائية مؤذية <b>HARMFUL CHEMICALS</b></p>	 <p><b>غاز كبريتيد الهيدروجين</b> <b>HYDROGEN SULFIDE</b></p>	 <p><b>ضوضاء عالية</b> مساحة <b>HIGH NOISE AREA</b></p>
<p><b>DANGER</b>  <b>خطر</b> <b>خطر كهربائي</b> الرجاء الابتعاد <b>ELECTRICAL HAZARD</b> <b>KEEP OUT</b></p>	 <p><b>الرجاء عدم استخدام المنصة في حالة تشغيل بئر الغاز</b> <b>DO NOT ACCESS THE PLATFORM WHEN THE WELL IS IN OPERATION</b></p>	<p><b>DANGER</b>  <b>خطر</b> مكان ضيق دخول بتصريح فقط <b>CONFINED SPACE</b> <b>ENTRY BY PERMIT ONLY</b></p>	 <p><b>للأشخاص المصرح لهم فقط</b> <b>AUTHORISED PERSONNEL ONLY</b> <b>الرجاء عدم الدخول</b> <b>DO NOT ENTER</b></p>	

## STAINLESS STEEL INTERNAL SIGNAGE

Stainless Steel signs are hugely versatile and can be used internally or externally for an enduring modern appearance. It is completely weatherproof and will stand out and endure even the harshest of weather conditions.







## Stainless Steel Decorative Sheets

We provide these Designer/Decorative Stainless Steel Sheets in various types like

No. 8/ Super Mirror Sheets, Hairline/Brushed Sheets, Etched Sheets, Embossed Sheets, 3D/Stamping Sheets, Vibration Sheets, Bead Blast Sheets, Elevator Designer Sheets, Stainless Steel Dividers, Perforated Sheets, etc.

SKG Publicity & Advertising Co. WLL is specialized in photo chemical etching of stainless steel/Brass in large quantities. Stainless steel is the first choice for a lot of different applications due to its favorable properties. The stainless steel plates are taken as the main material for etching.

**Custom Design** : We can make the design and production as per the needs of clients.

**Application** : Wall cladding, Elevator decoration, door, outdoor works, ads nameplates, furniture, corridor boards, external wall, hotel lobbies and decoration, as well as various stainless steel products.

**Cleaning & Maintenance** : Use neutral cleanser & soft cotton cloth. Do not use acid cleanser & rough material. We can make the design and production as per the needs of clients.





## BRONZE AND BRASS SIGNAGES

Etched bronze and brass plaques provide a striking gold background. Whether you need etched brass signs and plaques for museum exhibits or a corporate identity sign for the front of your building, choose high-quality brass plaques from Impact Signs. Our interior and exterior etched bronze and brass plaques can accommodate even the finest details and smallest text. All of our custom etched plaques are coated with an extremely durable, oven-baked clear polyurethane to protect the surface outdoors. Plus, our earth-friendly processes doesn't use lead or mercury alloys.



## EXHIBITION STANDS

Generally, an exhibition stand is quite literally a 'stand' or space within an exhibition in which a business 'exhibits' or share it's products, services or brand with visitors. Typically any of these stands or spaces will involve some degree of graphics and messaging to suit the needs of the organisation exhibiting





## ALUMINUM VACUUM PACKAGING AND SHIPPING

Aluminum Vacuum Packaging Foil is a multilayered product obtained from laminating 3 or 4 technical materials supplying a very powerful barrier against water vapour and moisture. These multiple layers are Polyester, Nylon, Foil, and Polyethylene which when combined are strong enough to safeguard and create a puncture & moisture resistance package. Aluminum Barrier Foil Packaging works on the principle of Climatic Packaging.

The Barrier Foil acts as a Barrier to the entry of Moisture inside the Packaging. It is sealed properly to ensure that outside Atmospheric moisture is not able to reach the metallic surface in the Packaging. Moreover, the Climate inside the Packaging is Vaccumized to reduce the quantum of Moisture and Air. Additional Moisture Absorbers and VCI materials are added to attain relative humidity less than 40% and Corrosion Protection respectively.







## LASER ENGRAVED GLASS BOTTLES

With the popularity and use of perfumes all over the world, personalized product design has become a fashion. The customization of glass products is undoubtedly an expensive expenditure. For small-volume perfume bottles, it is not so easy to achieve, so how to reducing this expenditure and making personalization easy and unique?

Traditional hand engraving or screen printing is performed on the glass surface, The hand engraving is slower, screen printing has no uniqueness. While UV laser marking uses non-contact processing to mark any surface, it has very high speed. usually finish work in few minutes. Because of the particularity of the laser, the glass bottle body will not be deformed or heated to deteriorate the perfume, and the perfume bottle also will not be damaged by external forces.



## ENAMEL PIN BADGES

we are a professional lapel pin manufacturer. Skg Advertising Co WLL has its reputation on producing high quality lapel pins for companies, groups and events. We pride ourselves on our superior craftsmanship and product excellence in the custom lapel pin industry.





## CUSTOM AWARD PLAQUES & PERSONALIZED ENGRAVED PLAQUES

Recognize achievements of employees, team members and leaders with personalized award plaques. Whether celebrating top performers with a custom award for employee of the month or honoring community service volunteers, a plaque is the perfect way to say thank you

MATERIAL : CRYSTAL , ACRYLIC , STAINLESS STEEL, ALUMINIUM, BRASS / COPPER, WOODEN, REZIN,



## LUXURY METAL STICKERS

Introducing our new Electroplated Luxury Metal Stickers. If you are looking for a product that looks built rather than printed, then Metal Stickers are for you. This product can give you that subtle classy look that your brand needs. It can be embossed in Gold and Silver color that speaks exclusivity.

## APPLICATION OF LUXURY METAL STICKERS.

Custom metal stickers can be used on different products and materials. They can be used on woods, glass, laptops, gates, plastic products, televisions, & home appliances. You always need stickers to give a tag to the product. Hence, use these beautiful golden, silver, custom metal stickers on your products and makethem stand out from the crowd.





# PHOTOLUMINESCENCE SIGN

What is Photoluminescent (PL)?

Photoluminescent is the light emitted from a matter that absorbs photons from surrounding electromagnetic radiation (nearby light sources). Strontium Aluminate is a solid, odorless, non-flammable, pale yellow mineral that is used by PL Solutions to create the photoluminescence material (PLM) in their products. There are many chemicals used to create PLM, but why Strontium Aluminate? It is chemically and biologically inert. PL Solutions produces it in a proprietary laboratory process, which is 100% non-toxic using catalysts that are environmentally friendly. The PL absorbs any ambient area lighting and then emits that light once power is lost or an emergency condition occurs.



## PHOTOLUMINESCENT EXIT SIGNS & MARKINGS:

The reliable PL Solutions Safety Guidance System is a complete suite of photoluminescent safety components essential for comprehensive low-level emergency evacuation routes. By installing a photoluminescent directional system for evacuation during sudden blackout or smoke-laden conditions, you greatly reduce your potential liability, but more importantly you can save lives



## CREATE YOUR OWN CUSTOM LED NEON

Statistically, one foot of the conventional neon light absorbs about 20 watts of electricity per hour. In contrast, the same length and thickness of the LED neon tube can be consumed as low as 1.2 watts for the same duration.



# INDOOR FLAG WITH FLAGPOLE

## Feature

The indoor flagpole made from stainless steel, is 2.6 meters high with 2.5mm wall thickness. This classic indoor flag kit comes complete with high gloss gold titanium base and gold stainless steel top finial is both stylish and affordable. This kit is perfect for any area that needs a traditional indoor flag kit. Use it to give a patriotic touch to your presentations and meetings, or even take it on parade.

## Flag:

Super tough 3ft x 5ft 100% nylon Bahrain flag

## Recommend flag size:

1.5 metre - 1 yd (91cm x 45cm)

2 metre - 2 yd (183cm x 91cm)

2.5 metre - 2yd (228cm x 114cm)

3 metre - 2.5yd (274cm x 137cm)

## Pole topper:

The pole topper is consist of four fittings, easy to fit together.

## Pole:

The pole is produced from stainless steel plate of one-piece construction.

## Base & Cover:

The single base is made from galvanized steel ,the high gloss gold titanium cover has one hole for flagpole stand.





## CUSTOM METAL LABELS & TAGS FOR CLOTHING LINE

Metal labels are metal accessories for clothing fashion brands, including aluminum labels, metal logo tags, metal ID tags, stainless steel labels, etc. We supply custom metal labels and custom metal tags with logos. Those labels use raw materials such as copper, brass, aluminum, zinc alloy, and stainless steel. Processes involve stamping, printing, or laser cutting. Together with them, electroplating, plastic dripping, and other processes are of your choice. We die-cut, emboss, or engrave intricate logos or names with high precision. They are common in sewing on clothing fabric, leather, handbag, shoes, hats, purses, etc.



## WHY METAL LABELS?

Any company that works in heavy industry or operates in harsh conditions is going to need equipment to match. It's important not only that equipment can perform, but that you're able to track it too. However, the typical label will erode away under such extreme conditions, which makes it harder to track assets and important data. Inscribing important information on high-quality metal labels will resist the rigors of business and keep the information intact.



## MALL INTERNAL SIGNAGES

Indoor display advertising has become one of the most traditional yet highly effective ways to advertise new products, help customers navigate a store and reinforce a brand's identity.

When compared to any other form of indoor signage, LED has proven to be more efficient, valuable, and useful for diverse indoor applications. LED Signage is becoming more attractive to business owners who are looking for digital displays that provide high resolution and advanced technology.

When choosing digital display signage for business, there are many options to consider. However, LED signage has exceeded all expectations with robust technology, colorful display and innovative solutions. For these benefits, it is recommended to opt for LED Signage to guarantee the best quality and experience





## GLASS & WALL GRAPHICS

Creative ways glass branding can express your brand? To us, your office environment provides a great opportunity and medium to increase your brand awareness, promote productivity in your staff and create that atmosphere your business seeks to create. Glass is being used to give the appearance of openness. There is so much to love about Glass signages, its diversity, and uniqueness. You are never limited. Glass Murals can either be subtle or stylish. Using printable frosted vinyl's to cut out shapes on windows and glass partitions will look both professional and conform to workplace safety standards.





## NON - ILLUMINATED SIGNS

Interior and exterior advertising advertising, Company logo sign, store facade building letter sign, business and commercial non-illuminated signage letter sign

Your metal non-illuminated letters are installed directly to the building's façade. Non-illuminated stainless steel letters are not internally lighted but different factors like positioning, high-quality enamel finishing play a great role in attracting the customers.



## ILLUMINATED SIGNS - LIGHT UP YOUR BRAND WITH OUR ILLUMINATED SIGNS

We manufacture our illuminated signs using the best materials and state-of-the-art machinery, and they are finished to a very high standard. Illuminated signs are designed primarily for outdoor usage and are robustly built to withstand all weathers and are fitted with outdoor rated electrical components.





## Vehicle Branding



## Acrylic Wall Branding



## Event Flags



## Wall Branding



## Event Backdrop





# GIFTS



Cable Tag Embossing



Metal Etching



Wood Cutting



HP Latex 570 Printer



- Skg Publicity & Advertising Co wll - Bahrain
- Skg Interior & Decoration Co wll - Bahrain
- Panel Electrical & Electronics Services Co wll - Bahrain
- Skg Limited Co. LLC - KSA
- Skg Electrical & Contracting Co - India



Bahrain: +973 395 17 565

KSA : +966 550021364



skg\_advertising\_

Solar Signboard - Industrial Tagging

Tel: +973 17250703, PO Box: 2614, Manama, Bahrain

E: info@skgadvertisingwll.com, [www.skgadvertisingwll.com](http://www.skgadvertisingwll.com)

